

11

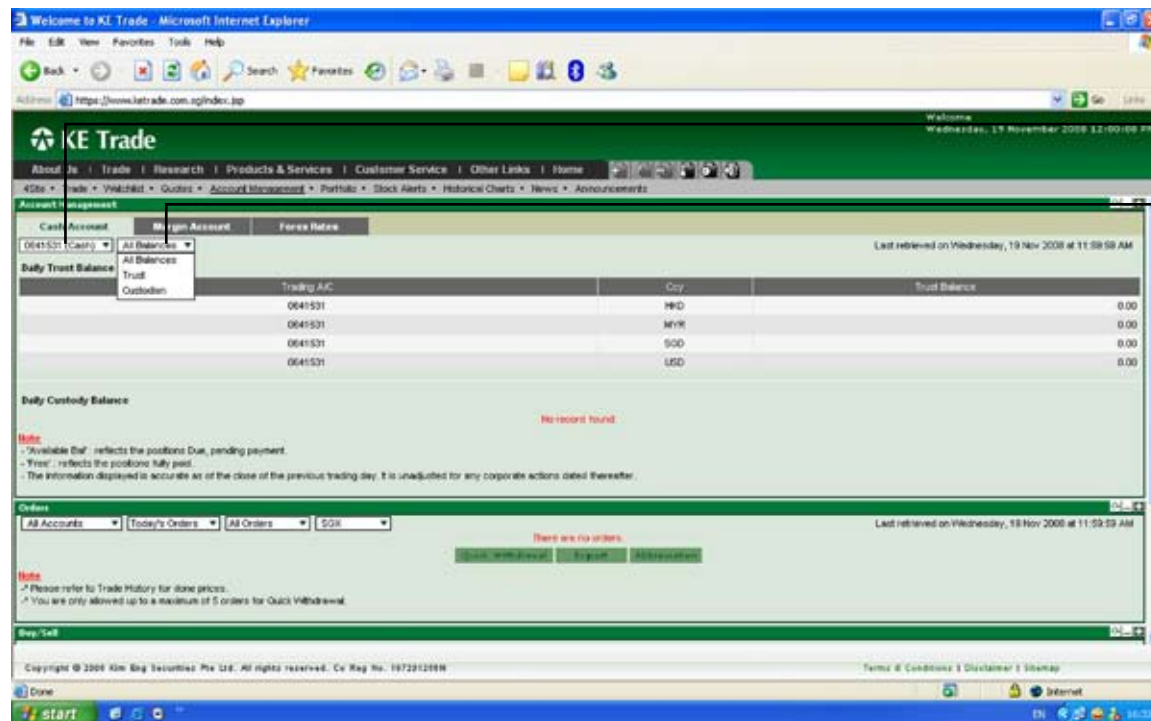
ACCOUNT MANAGEMENT PAGELET

At a glance, the **ACCOUNT MANAGEMENT** pagelet lets you know your balances in our safekeeping

In Cash Account, it gives you information of your cash balances held in trust and your shares that are held in custody for you. In Margin Account, you will see an overview snapshot of your stock holdings, ledger, and margin summary, i.e. collaterals placed with us, stocks bought under margin, as well as balances.

11.1 For Cash Account:

- Select **Cash Account** to view in Drop-down Menu
- Select balance(s) in account to view in Drop-down Menu - View All Balances, Trust balance, or Custodian balance



Select Account Balance(s) In Drop-down Menu

Select Account Balance To View

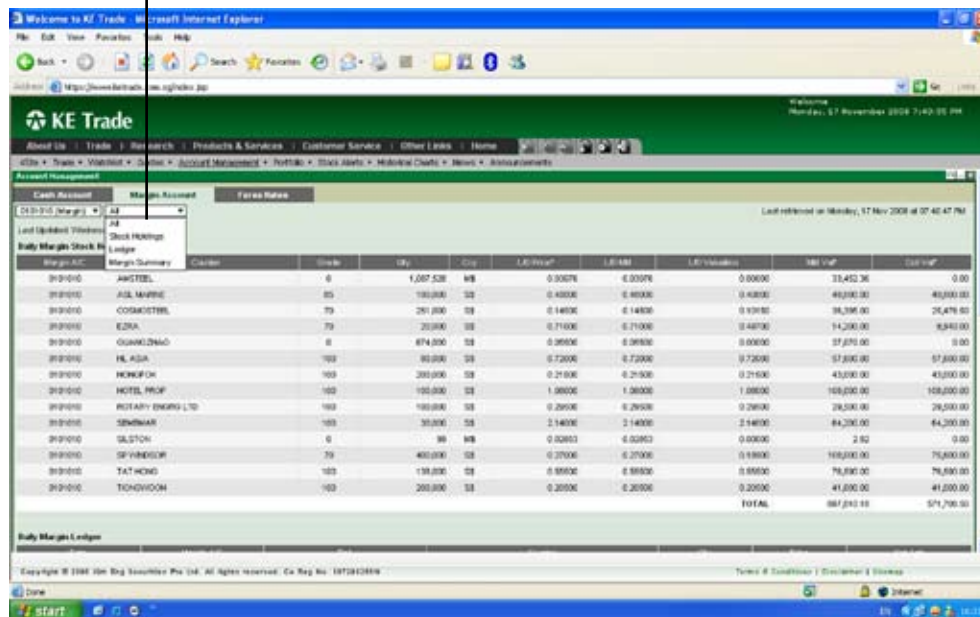
11.2 For Margin Account

- a) Select account(s) to view in Drop-down Menu
- b) Select balance(s) in account to view in Drop-down Menu – View All Balances, Stock Holdings, Ledger, or Margin Summary

Note that all outstanding contracts bought under margin are displayed in PORTFOLIO Pagelet under O/S Positions (outstanding positions)

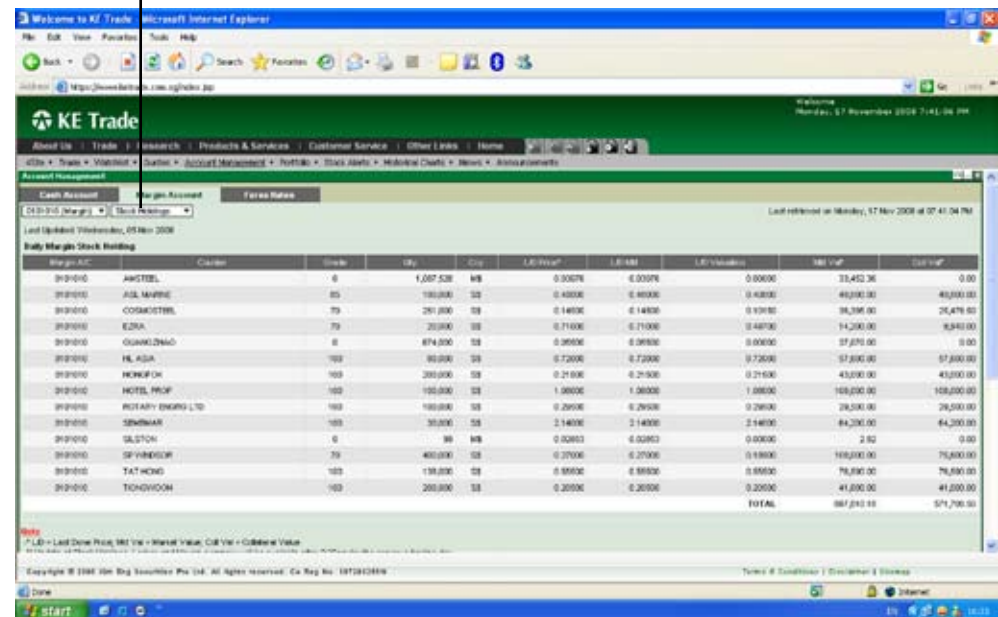
View All Balances

Select Account Balance (s) In Drop-down Menu



View Stock Holdings

Select Account Balance (s) In Drop-down Menu



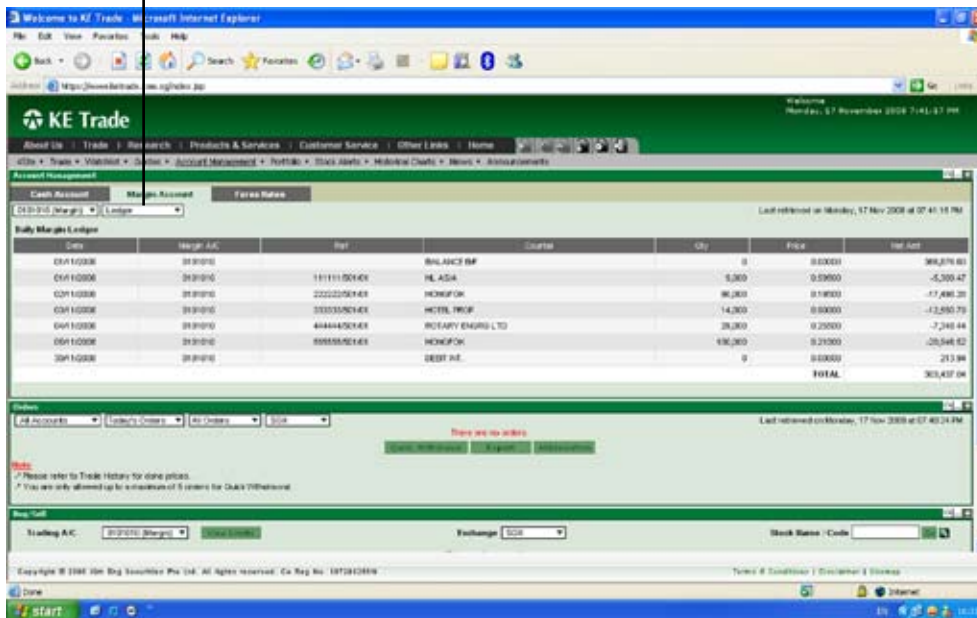
11

ACCOUNT MANAGEMENT PAGELET

11.2 For Margin Account (Continued)

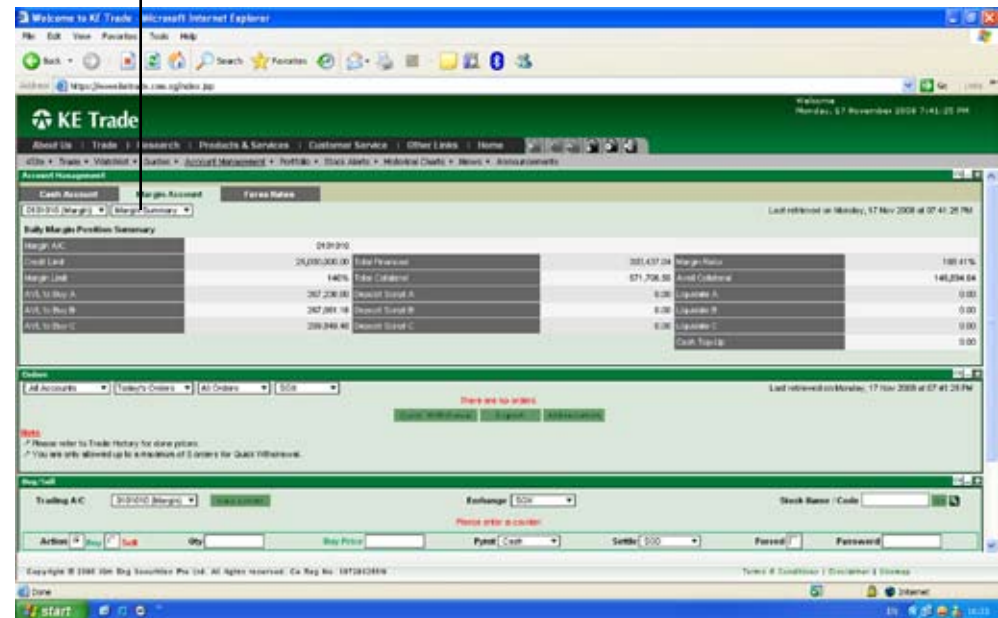
View Ledger

Select Account Balance (s) In Drop-down Menu



View Margin Summary

Select Account Balance (s) In Drop-down Menu



Furthermore, we have placed our indicative foreign exchange rates of the markets we offer over KE Trade for your easy understanding of foreign exchange conversion.

Welcome to KE Trade - Microsoft Internet Explorer

Address: https://www.ketrade.com.sg/index.jsp

Welcome Wednesday, 19 November 2008 12:01:04 PM

Account Management

Cash Account | Margin Account | **Forex Rates**

Last retrieved on Wednesday, 19 Nov 2008 at 12:01:03 PM
Last updated on 24/10/2008

Ccy	Buy	Sell
AUD	0.9923	1.0007
HKD	0.1928	0.1948
JPY	0.0154	0.0155
MYR	0.4171	0.4245
THB	0.0429	0.0439
USD	1.4996	1.5080

Note
- The forex rates shown above are indicative.

Orders

All Accounts | Today's Orders | All Orders | SOX

Last retrieved on Wednesday, 19 Nov 2008 at 12:00:59 PM

There are no orders.

Quick Withdrawal | Export | Abbreviation

Note
- Please refer to Trade History for done prices.
- You are only allowed up to a maximum of 5 orders for Quick Withdrawal.

Buy/Sell

Trading A/C: 0101010 (Margin) | View Limits | Exchange: SOX | Stock Name / Code: []

Copyright © 2008 Kim Eng Securities Pte Ltd. All rights reserved. Co Reg No. 197201266N

Forex Rates