

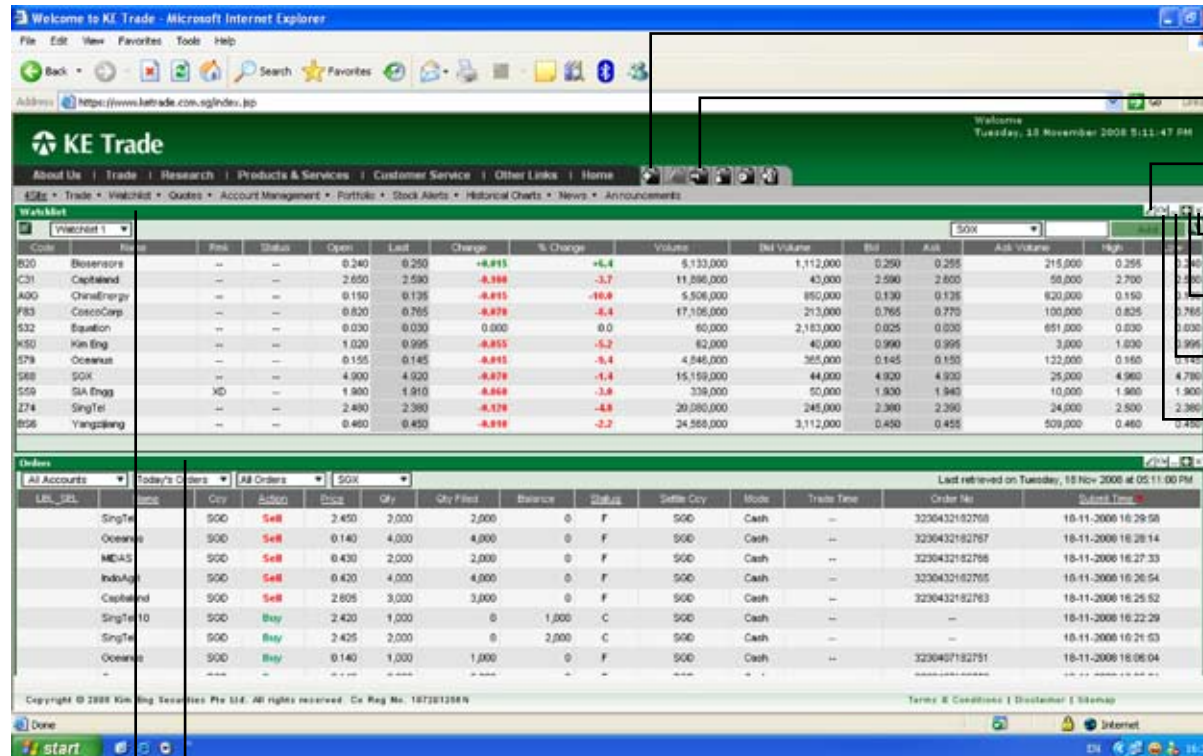


4Site is a pre-configured default landing page which displays the, ORDERS , BUY/SELL and WATCHLIST Pagelets. 4SITE is a user configurable page where you can add more pagelets and customize them to your preference. The maximum number of pagelets which can be added is 10.

For premium users, the option of having two additional customizable 4SITE2 and 4SITE3 will be made available.

## 5.1 Add Pagelet

- 1) Go to the Add Pagelet Icon 
- 2) Click, drag & drop desired pagelet to add it into your 4SITE page
- 3) The pagelets available for you to add into 4SITE are found in the pagelet list below
- 4) Click on the Save Pagelet Icon  to save all your changes to 4SITE



- Add Pagelet Icon
- Save Pagelet Icon
- Edit Pagelet
- Close Pagelet
- Maximise Pagelet
- Minimize Pagelet
- Refresh Pagelet

Orders Pagelet

Watchlist Pagelet

Add Pagelet Icon

Save Pagelet Icon

The screenshot shows the KE Trade website interface. The main content area is divided into three sections: Watchlist, Pagelet List, and Orders. The Watchlist section displays a table of stock prices with columns for Code, Name, Price, Status, Open, Last, Change, and % Change. The Pagelet List section is highlighted with a box and contains a list of pagelets such as Account Management, Alert Criteria, Announcements, Batch Order, Buy/Sell, Indices, Intraday Chart, Market Depth, Market Summary, News from Reuters, Orders, Portfolio, Quotes, Time & Sales, Trade Summary, and Watchlist. The Orders section displays a table of orders with columns for LBL\_SEL, Name, Qty, Action, Price, Qty Filed, Balance, Status, Settle Qty, Mode, Trade Time, Order No, and Submit Time. The Pagelet List section is highlighted with a box and arrows pointing to 'Add Pagelet Icon' and 'Save Pagelet Icon' labels.

Code	Name	Price	Status	Open	Last	Change	% Change
B20	Biosensors	0.240	--	0.240	0.250	+0.015	+6.4
C31	Capitaland	2.650	--	2.650	2.590	-0.100	-3.7
A00	ChinaEnergy	0.150	--	0.150	0.135	-0.015	-10.0
F83	CoscoCorp	0.820	--	0.820	0.785	-0.070	-8.4
532	Equation	0.030	--	0.030	0.030	0.000	0.0
K50	Kim Eng	1.020	--	1.020	0.995	-0.055	-5.2
579	Oceanus	0.155	--	0.155	0.145	-0.015	-9.4
S88	SGX	4.900	--	4.900	4.920	-0.070	-1.4
S59	SIA Engg	1.980	XD	1.980	1.910	-0.060	-3.0
Z74	SingTel	2.480	--	2.480	2.380	-0.120	-4.8
B56	Yangzijiang	0.460	--	0.460	0.450	-0.010	-2.2

Time	Bid	Ask	Ask Volume	High	Low
1,112,000	0.250	0.255	215,000	0.255	0.240
43,000	2.590	2.600	58,000	2.700	2.580
850,000	0.130	0.135	620,000	0.150	0.130
213,000	0.785	0.770	100,000	0.825	0.785
2,163,000	0.025	0.030	661,000	0.030	0.030
40,000	0.990	0.995	3,000	1.030	0.995
365,000	0.145	0.150	122,000	0.160	0.145
44,000	4.920	4.930	25,000	4.960	4.780
50,000	1.930	1.940	10,000	1.980	1.900
245,000	2.380	2.390	24,000	2.500	2.380
3,112,000	0.450	0.455	509,000	0.460	0.450

LBL_SEL	Name	Qty	Action	Price	Qty Filed	Balance	Status	Settle Qty	Mode	Trade Time	Order No	Submit Time
	SingTel	2,450	Sell	2.450	2,000	2,000	0	F	SGO	Cash	3230432182768	18-11-2008 16:29:58
	Oceanus	4,000	Sell	0.140	4,000	4,000	0	F	SGO	Cash	3230432182767	18-11-2008 16:28:14
	MIDAS	2,000	Sell	0.430	2,000	2,000	0	F	SGO	Cash	3230432182766	18-11-2008 16:27:33
	IndoAgri	4,000	Sell	0.420	4,000	4,000	0	F	SGO	Cash	3230432182765	18-11-2008 16:26:54
	Capitaland	3,000	Sell	2.605	3,000	3,000	0	F	SGO	Cash	3230432182763	18-11-2008 16:25:52
	SingTel 10	1,000	Buy	2.420	1,000	0	1,000	C	SGO	Cash	--	18-11-2008 16:22:29
	SingTel	2,000	Buy	2.425	2,000	0	2,000	C	SGO	Cash	--	18-11-2008 16:21:53
	Oceanus	1,000	Buy	0.140	1,000	1,000	0	F	SGO	Cash	3230407162751	18-11-2008 16:06:04

Choose from a range of pagelets for your 4SITE to enhance your trading experience.

### Pagelet List

- Account Management Pagelet
- Alert Criteria Pagelet
- Announcements Pagelet
- Batch Order Pagelet
- Buy / Sell Pagelet
- Indices Pagelet
- Intraday Chart Pagelet
- Market Depth Pagelet
- Market Summary Pagelet
- News from Reuters Pagelet
- Orders Pagelet
- Portfolio Pagelet
- Quotes Pagelet
- Time & Sales Pagelet
- Trade Summary Pagelet
- Watchlist Pagelet

# 05.1

## EDIT PAGELET - Colours, Columns, Layout

### Features

- Customise position of pagelets
- Edit the colours of rows / columns of pagelets
- Edit the column fields and display sequence of fields on pagelets
- Edit the layout of pagelet display (for Buy/Sell pagelet only)
- Double click on counters on any of these pagelets (BUY/SELL, MARKET DEPTH, INTRADAY CHART, TRADE SUMMARY and TIME & SALES) to apply them to the following pagelets (Broadcast function):
  - a) Quotes
  - b) Watchlist
  - c) Market Depth
  - d) Buy / Sell
  - e) Trade Summary
  - f) Time & Sales

### 5.1.1 Customise position of pagelet

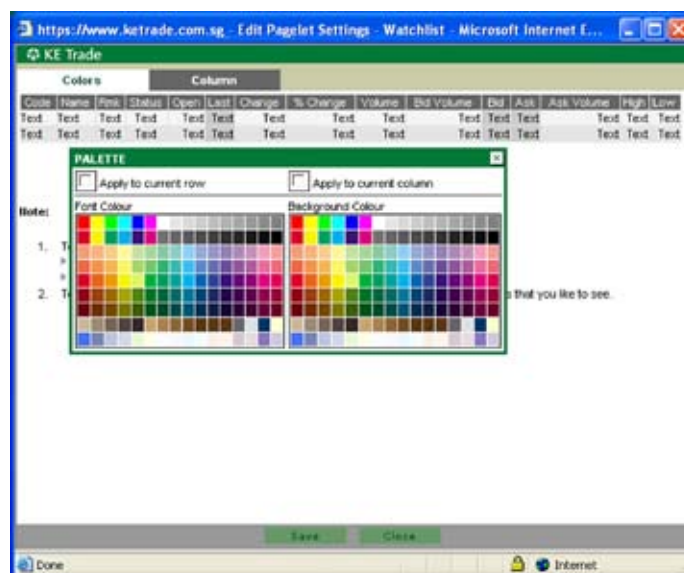
To customize the position of your pagelets, click and drag the pagelet and drop it to your desired position. You can shift the pagelet from the bottom of the 4SITE page to the top of the 4SITE page and vice versa.

### 5.1.2 Edit the colours of rows / columns of pagelet

To edit the number of columns of your pagelet display,

- a) Click on the Edit Icon  of the pagelet
- b) At the Edit Pagelet Settings popup window, click on any field on the header
- c) Click on a colour on the colour palette to select a colour for the font / background

You can also change the font and background colour of any cell in the odd / even row or column as well as the font and background colour of an entire column / row.



Pagelets which can be edited:





- Watchlist Pagelet
- Orders Pagelet
- Buy/Sell Pagelet
- Time & Sales Pagelet
- Trade Summary Pagelet
- Indices Pagelet
- Market Summary Pagelet
- News from Reuters Pagelet
- Market Depth Pagelet

# 05.1





## EDIT PAGELET - Colours, Columns, Layout

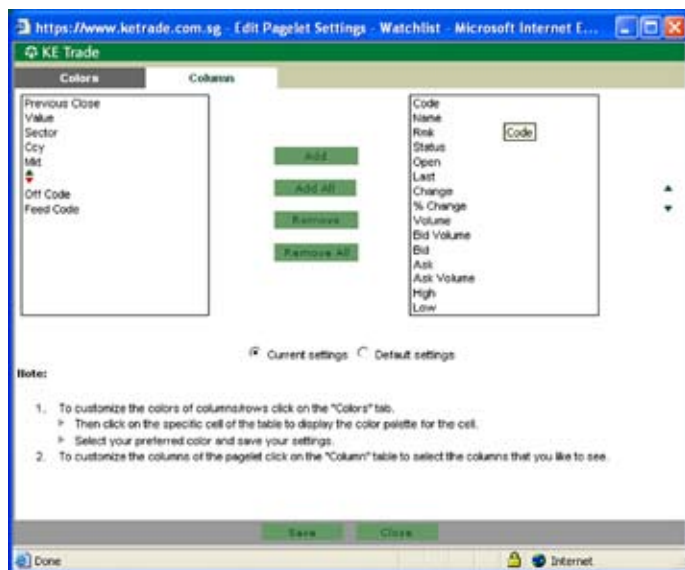
### 5.1.3 Edit the column fields and display sequence of fields on pagelets

To add column fields of your pagelet,

- Click on the Edit Icon  on your pagelet
- Click on the Column Tab  in the Edit Pagelet Settings popup window
- Click on any field of the box on the left to select a field
- Click on the Add Icon  to add the field to the pagelet
- Click on the Save Icon  to save your new settings

To remove column fields of your pagelet,

- Click on the Edit Icon  on your pagelet
- Click on the Column Tab  in the Edit Pagelet Settings popup window
- Click on any field of the box on the right to select a field
- Click on the Remove Icon  to remove the field from the pagelet
- Click on the Save Icon  to save your new settings



Pagelets which can be edited:

- Watchlist Pagelet
- Orders Pagelet
- Buy/Sell Pagelet
- Time & Sales Pagelet
- Trade Summary Pagelet
- Indices Pagelet
- Market Summary Pagelet
- News from Reuters Pagelet
- Market Depth Pagelet


You can also do a add all or remove all by clicking on the Add All Button  and Remove All Button  respectively.

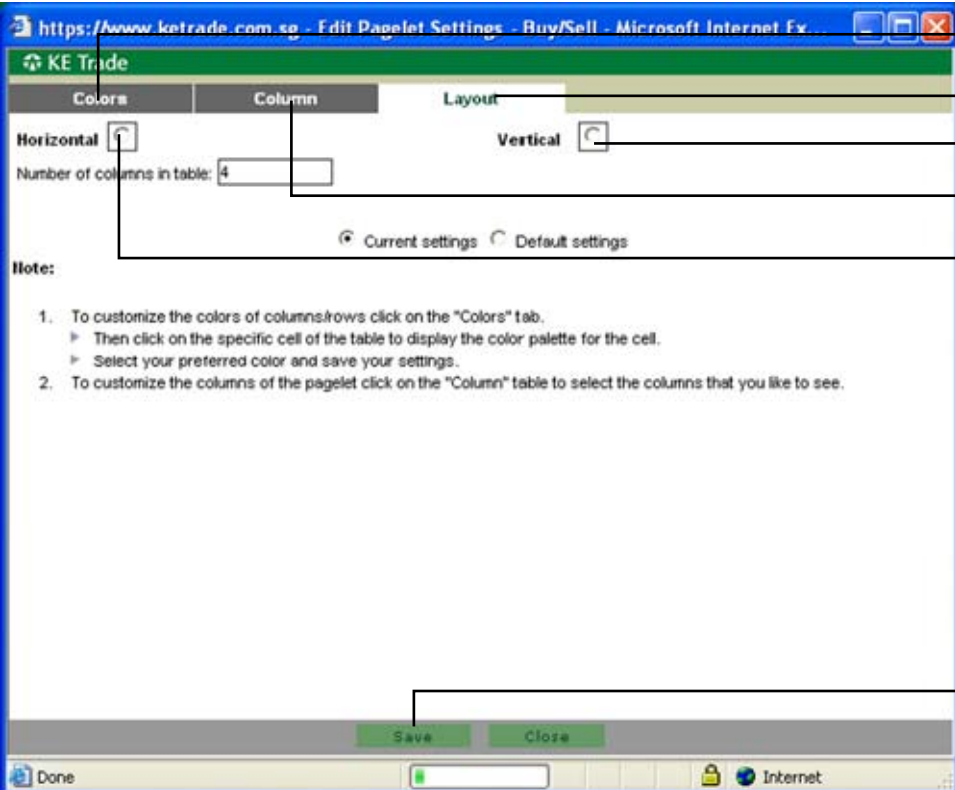
# 05.1

## EDIT PAGELET - Colours, Columns, Layout

### 5.4.1 Edit the layout of pagelet display (for Buy/Sell pagelet only)

To edit the layout of pagelet display,

- Click on the Edit Icon  of the Buy/Sell Pagelet
- Click on the Layout Tab in the Edit Pagelet Settings popup window
- Click on the Horizontal / Vertical checkbox
- Key in the number of columns which you require
- Click on the **Save** Button of the Edit Pagelet Settings popup window to save your settings



Colour Tab

Layout Tab

Vertical Checkbox

Column Tab

Horizontal Checkbox

Save Button