

06

WATCHLIST PAGELET

Features:

- View stock counters for local, foreign markets and market indices
- 10 watchlists are available (maximum of 50 counters each)

You can monitor your favourite Singapore and International stocks by adding them into your Watchlists.

The Watchlists are now more flexible as you can configure both local and foreign stocks all within the same Watchlist. With 10 watchlists available for you, it means that there are more stocks which you can watch over.



The screenshot displays the KE Trade website interface. At the top, there is a navigation menu with links for 'About Us', 'Trade', 'Research', 'Products & Services', 'Customer Service', and 'Other Links'. Below this, a 'Watchlist' section is visible, featuring a table with columns for 'Code', 'Watchlist', 'Open', 'Last', 'Change', '% Change', 'Volume', 'Bid Volume', 'Bid', 'Ask', 'High', and 'Low'. The table lists 10 watchlists, each with corresponding stock data. A dropdown menu is open, showing the 10 available watchlists: Watchlist 1 through Watchlist 10, and 'Yanjiang'. Below the table, there is a 'Orders' section with a table showing order details such as 'LRA_SEL', 'Status', 'Qty', 'Qty Filled', 'Balance', 'Status', 'Settle Qty', 'Mode', 'Trade Time', 'Order No', and 'Submit Time'. The page footer includes copyright information and a 'Terms & Conditions' link.

Drop-down Watchlist Menu
10 watchlists are Available

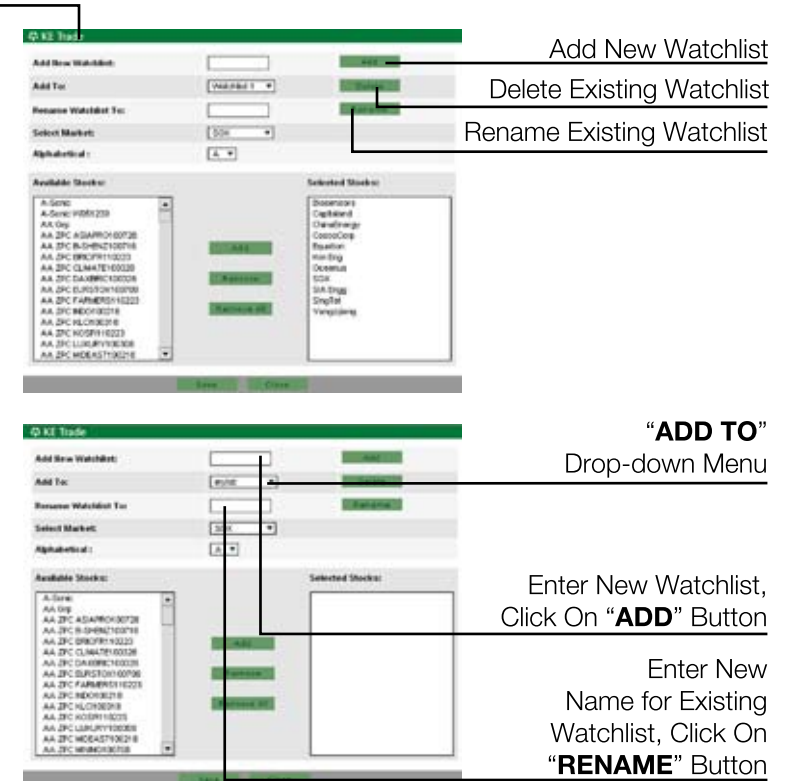
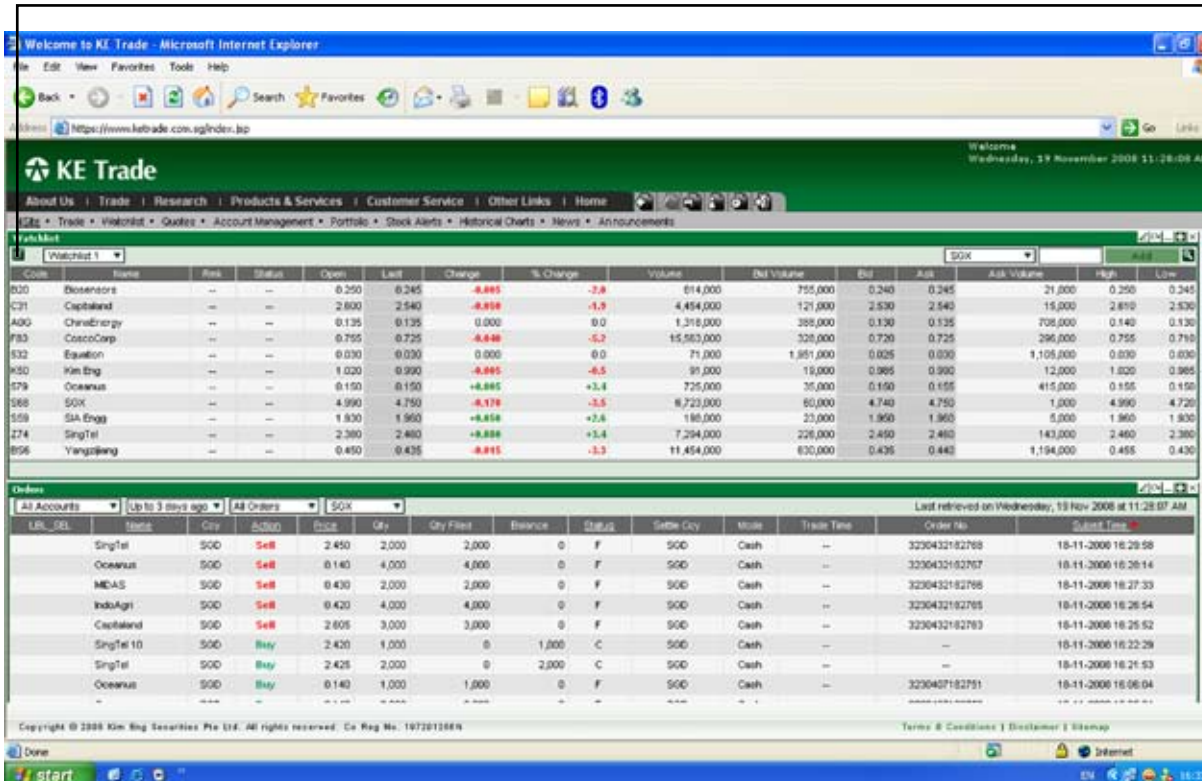
06

WATCHLIST PAGELET

6.1 How to create a watchlist on the WATCHLIST pagelet

- Click on the Edit Your Watchlist Icon  located at the top left hand corner of your WATCHLIST Pagelet
- Click on the Add To Drop-down Menu
- Enter the name of your watchlist (e.g. mylist) on the Add New Watchlist
- Click on the Add Icon
- Click on the Save Pagelet Icon 
- You can also add, remove counters and rename your watchlist here

Edit Your Watchlist Icon



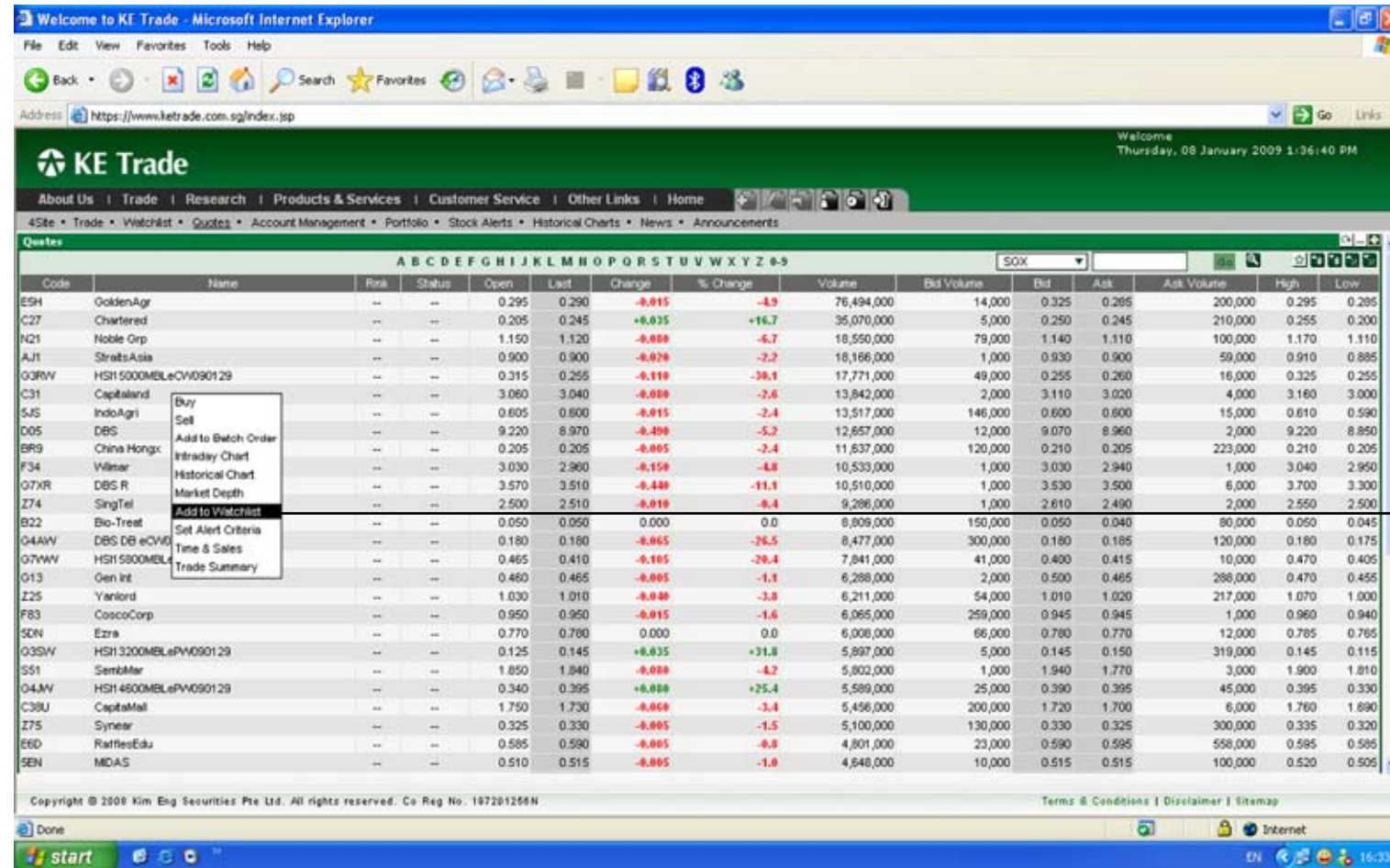
06

WATCHLIST PAGELET

6.2 How to Add Counters to Watchlist

Besides using the "Edit Watchlist" function to add counters to your Watchlist, there are 2 additional ways to add counters into your Watchlists:

1. Right click on desired counter from Quotes page, and click "Add to Watchlist" from the Drop-down Menu.





"ADD TO WATCHLIST"

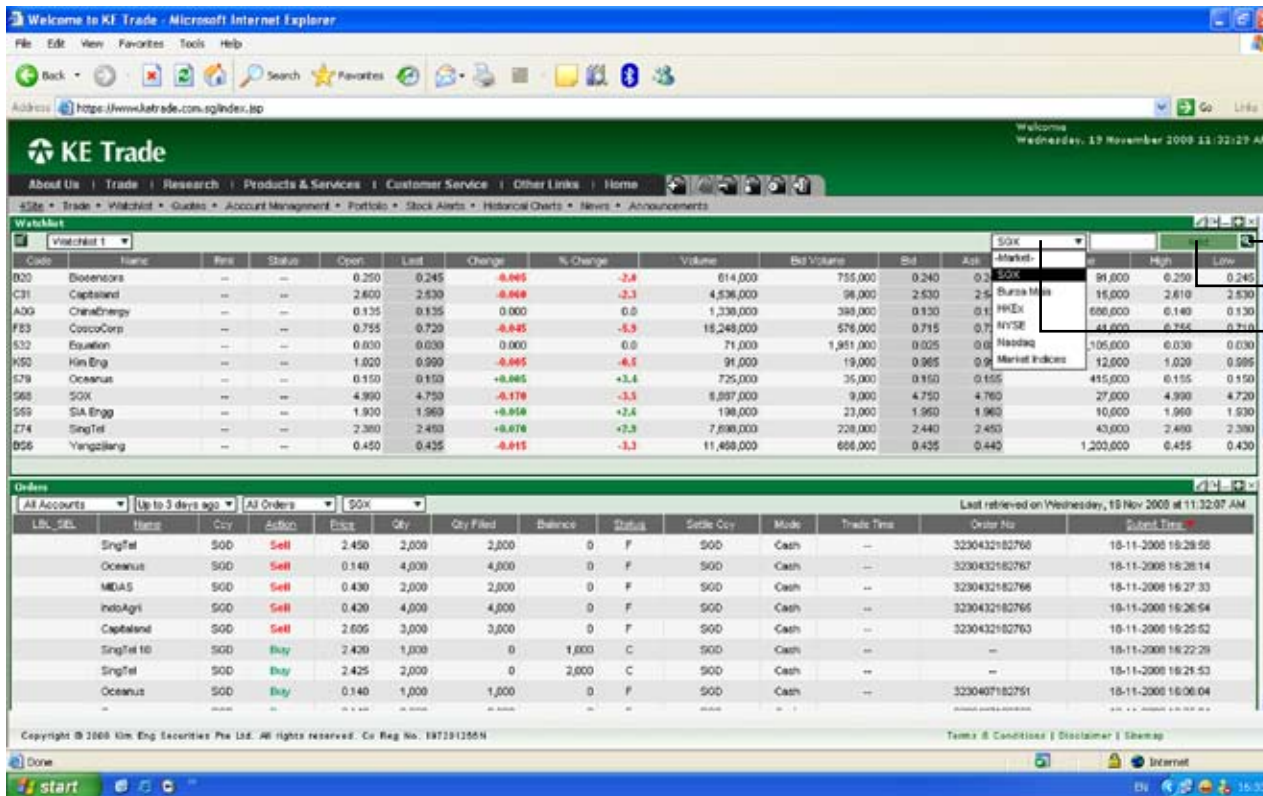
06

WATCHLIST PAGELET

6.2 How to Add Counters to Watchlist (Continued)

2. Search for counter

- a) Go to the top right hand corner of the WATCHLIST Pagelet
- b) Select desired market / market indices in the exchange Drop-down Menu
- c) Either choose to (1) enter counter name, then click on **Add** or (2) click on  to search for counter
- e) Click on the Save Pagelet Icon 



Search Counter

Add Counter

Exchange Drop-down Menu

06

WATCHLIST PAGELET

6.2 How to Add Counters to Watchlist (Continued)

Equity (Search By Name)

Click on "GO" Icon

Enter Stock Name Or Code

Search By Stock Name Or Code

Exchange Drop-down Menu

Search Steps:

1. Select the Market which the desired stock is in.
2. Enter the stock code or name that you wish to search for (You only need to enter first few characters of the stock code or name. The system will search for all the stocks that match your criteria. For example, to add 'DBS', just key in 'DB' in the entry field).
3. Click on the "Go" button.
4. Select the desired stock.

Equity (Search By Code)

Click on "GO" Icon

Enter Stock Name Or Code

Search By Stock Name Or Code

Exchange Drop-down Menu

Search Steps:

1. Select the Market which the desired stock is in.
2. Enter the stock code or name that you wish to search for (You only need to enter first few characters of the stock code or name. The system will search for all the stocks that match your criteria. For example, to add 'DBS', just key in 'DB' in the entry field).
3. Click on the "Go" button.
4. Select the desired stock.

Indices

Click on "GO" Icon

Enter Indices Name

Search By Indices Name Or Code

Exchange Drop-down Menu

Search Steps:

1. Select the Market which the desired Index is in.
2. Click on the "Go" button.
3. Select the desired Index.